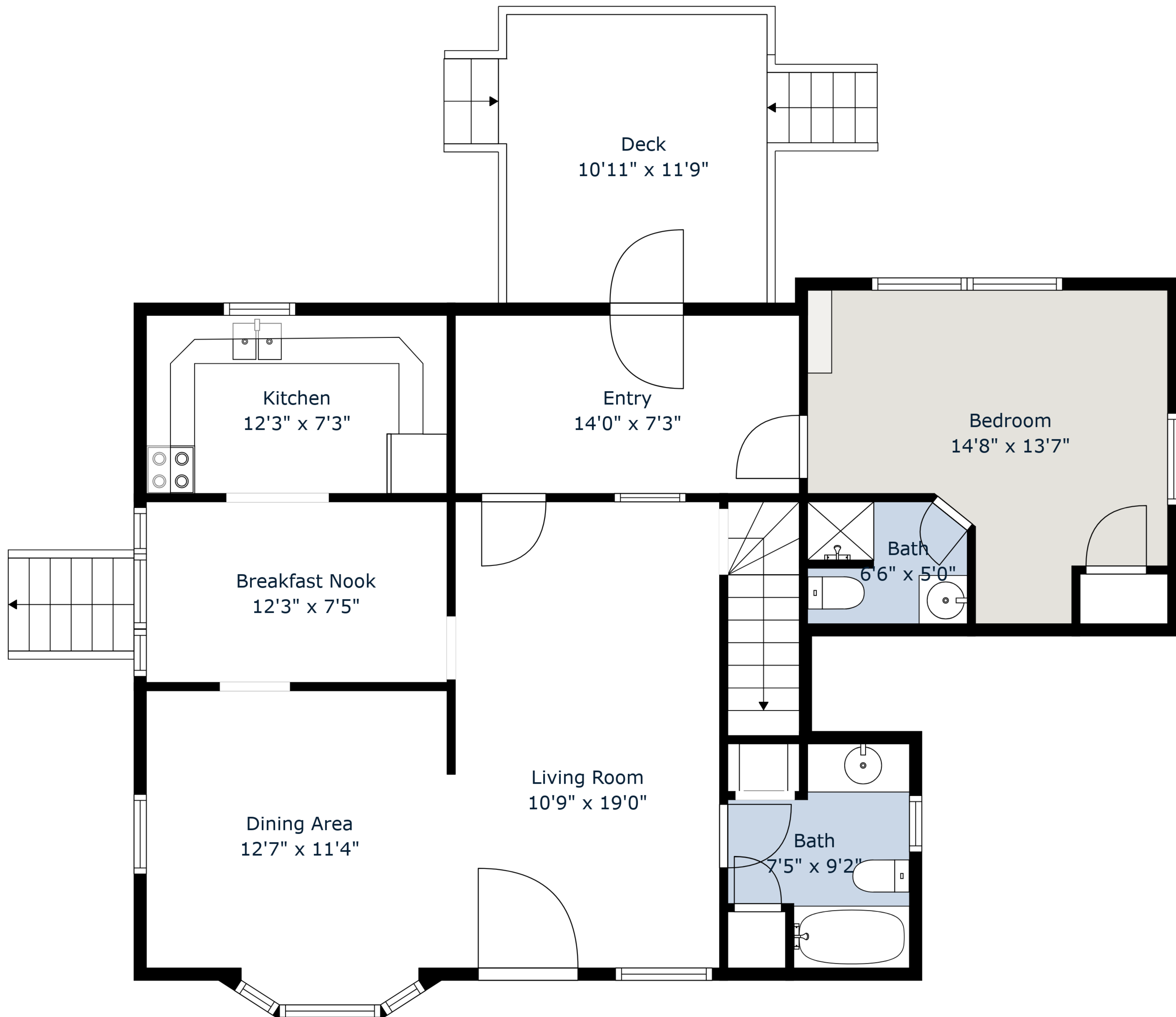


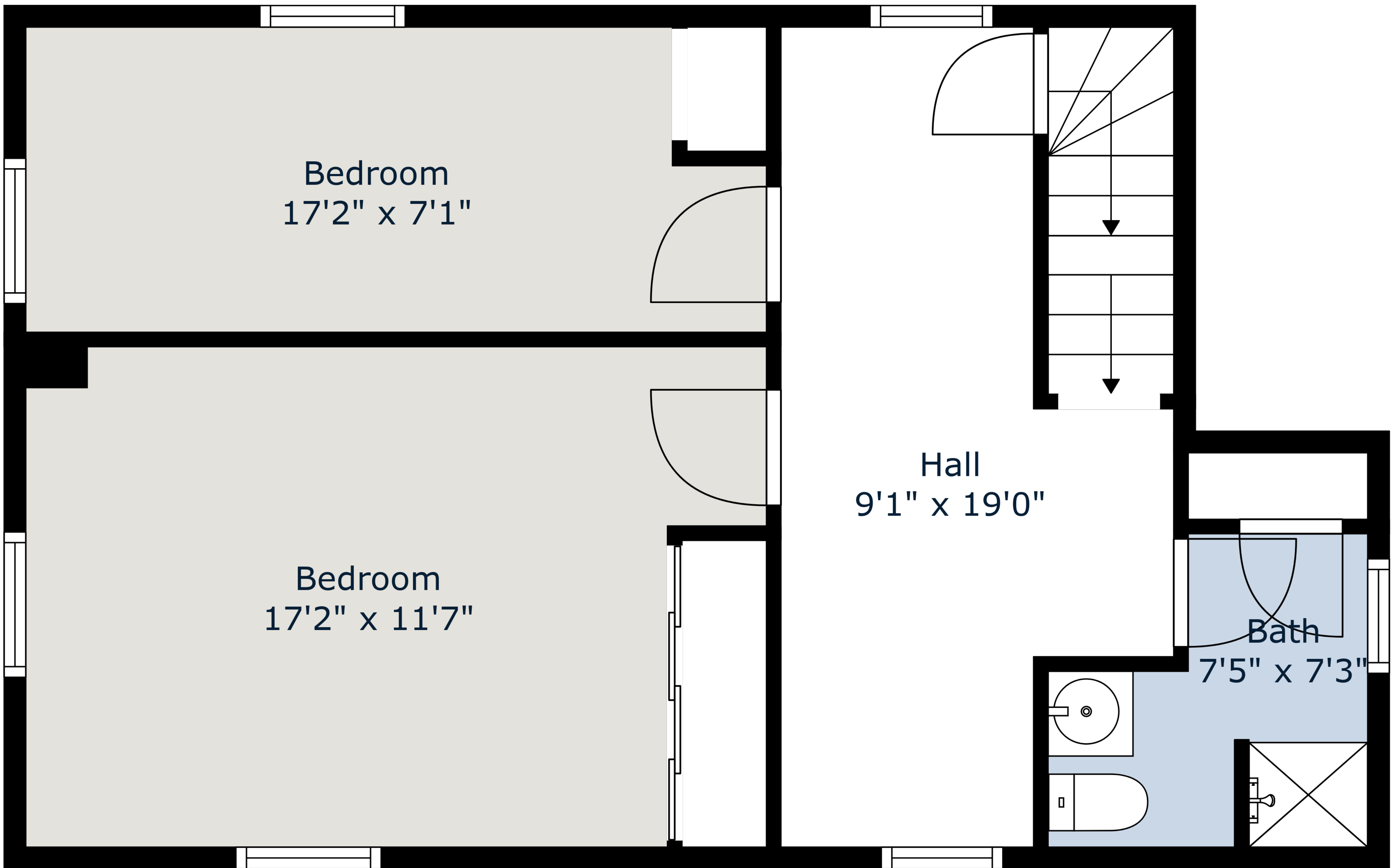
Total GLA: 1629 sq. ft | Total: 2761 sq. ft
Floor 1 - Below grade: (Excluded areas 462 sq. ft)
Floor 2: 1030 sq. ft (Excluded areas 157 sq. ft)
Floor 3: 599 sq. ft
Floor 4: 0 sq. ft (Excluded areas 513 sq. ft)

Sizes And Dimensions Are Approximate, Actual May Vary.



Total GLA: 1629 sq. ft | Total: 2761 sq. ft
 Floor 1 - Below grade: (Excluded areas 462 sq. ft)
 Floor 2: 1030 sq. ft (Excluded areas 157 sq. ft)
 Floor 3: 599 sq. ft
 Floor 4: 0 sq. ft (Excluded areas 513 sq. ft)

Sizes And Dimensions Are Approximate, Actual May Vary.

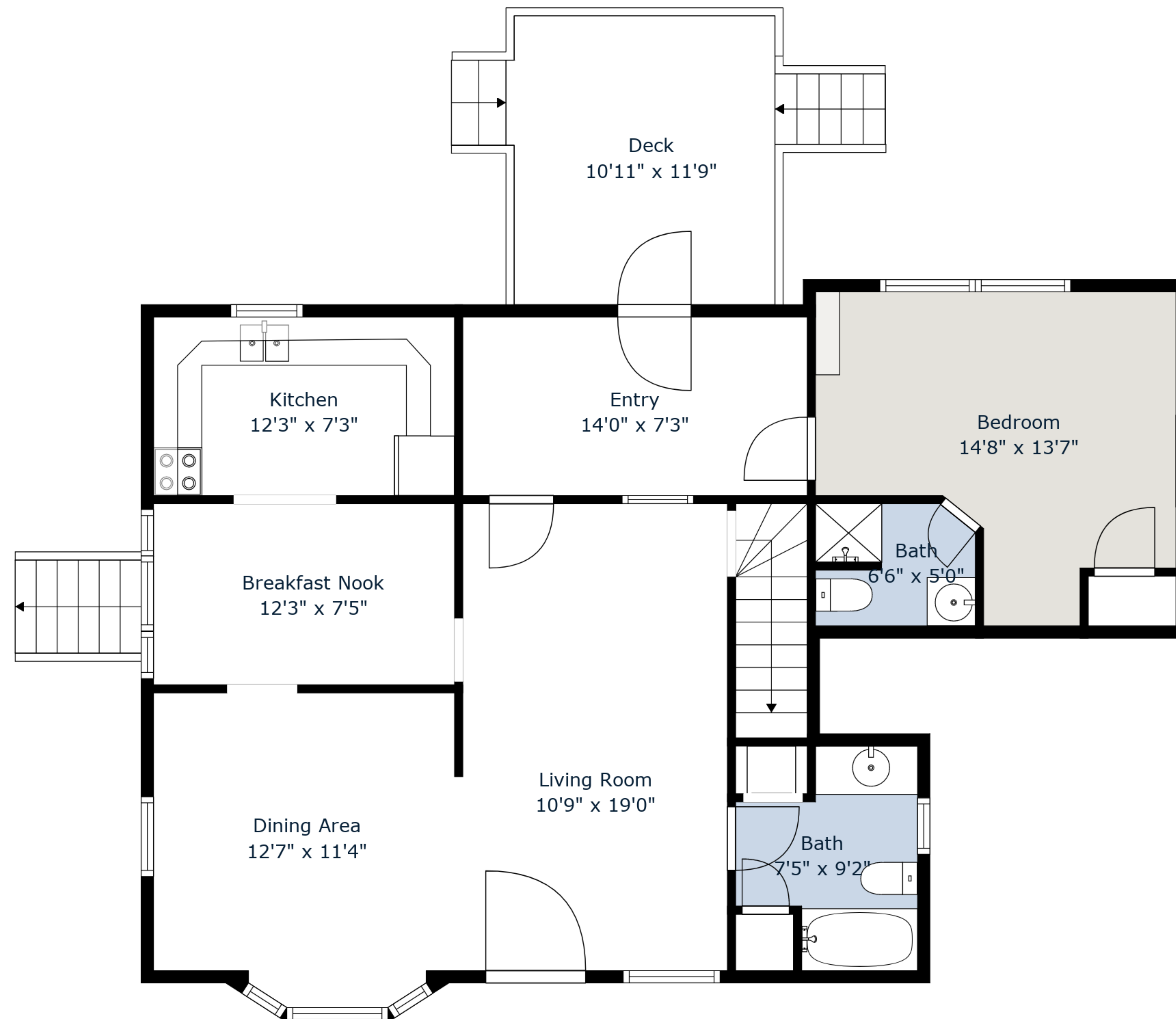


Total GLA: 1629 sq. ft | Total: 2761 sq. ft
Floor 1 - Below grade: (Excluded areas 462 sq. ft)
Floor 2: 1030 sq. ft (Excluded areas 157 sq. ft)
Floor 3: 599 sq. ft
Floor 4: 0 sq. ft (Excluded areas 513 sq. ft)

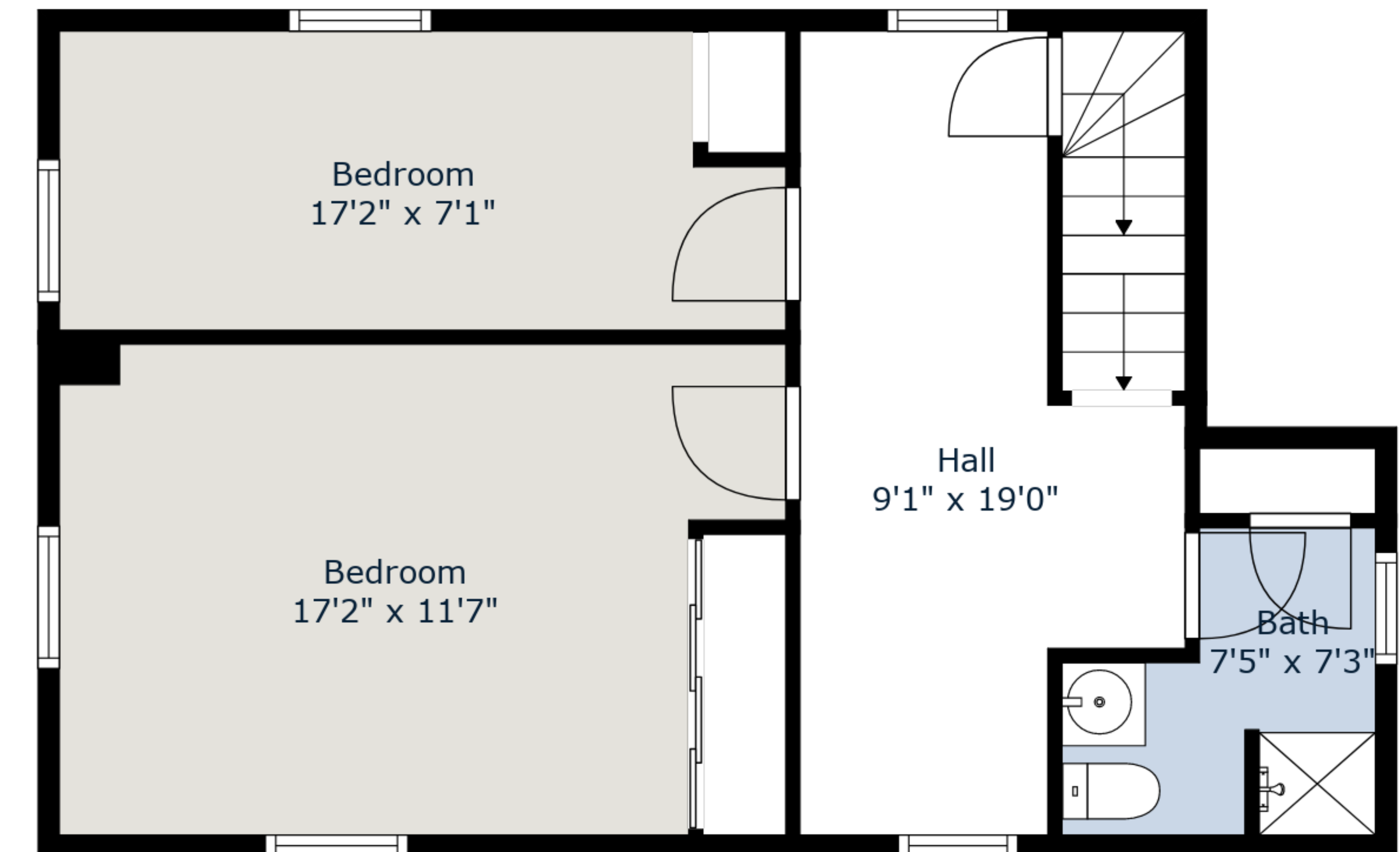
Sizes And Dimensions Are Approximate, Actual May Vary.



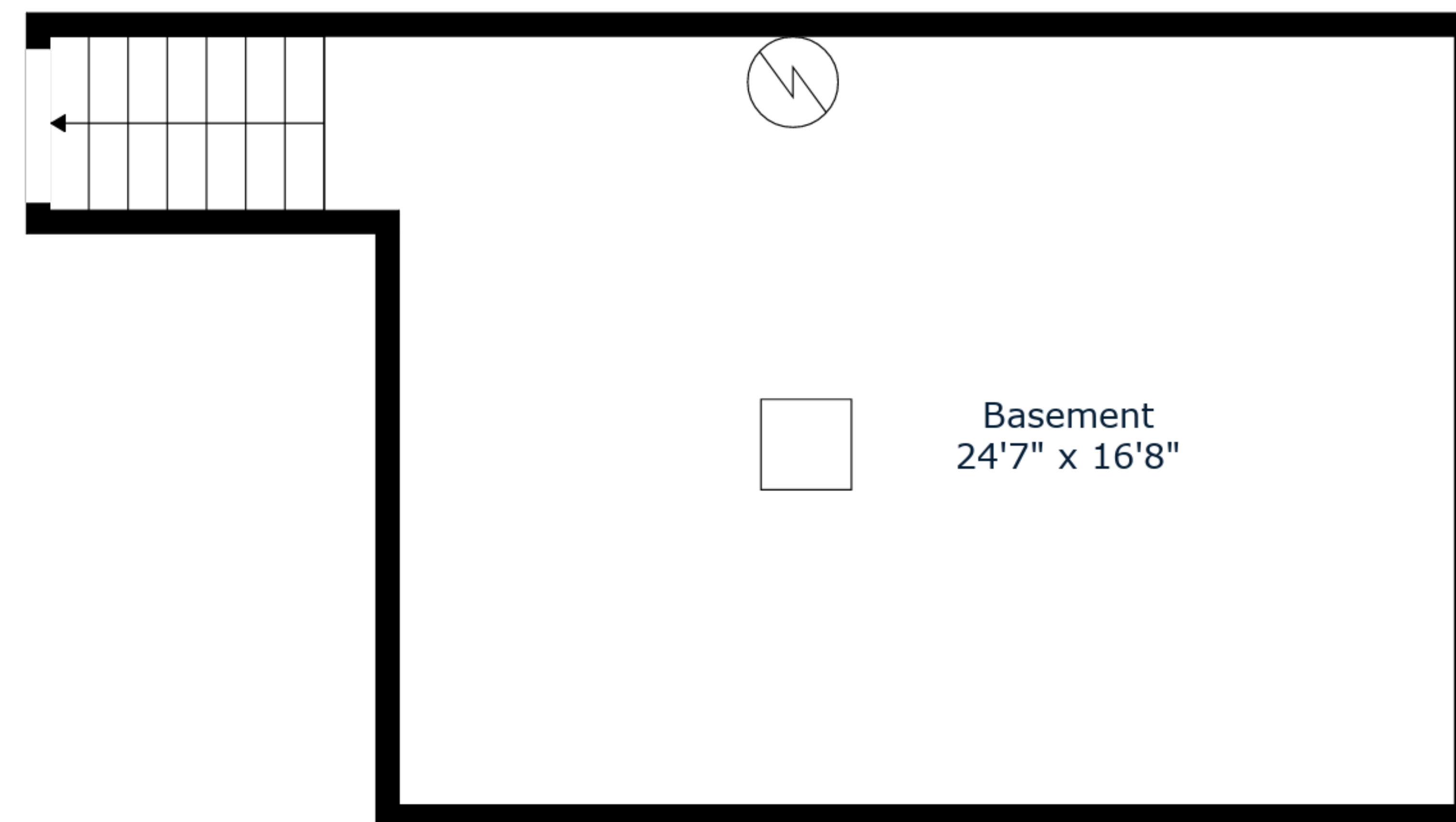
Attic
26'8" x 17'7"



Floor 2



Floor 3



Floor 1



Floor 4

Total GLA: 1629 sq. ft | Total: 2761 sq. ft
 Floor 1 - Below grade: (Excluded areas 462 sq. ft)
 Floor 2: 1030 sq. ft (Excluded areas 157 sq. ft)
 Floor 3: 599 sq. ft
 Floor 4: 0 sq. ft (Excluded areas 513 sq. ft)

Sizes And Dimensions Are Approximate, Actual May Vary.